

GEOCONN FAMILY (GEOCONN, GEOCONN-TS, MO-GT, MO-GT-TS) BLANKING DIMENSIONS

TABLE 1. BD (REGULAR BOX OD & SPECIAL CLEARANCE, Wsc1) FOR GEOCONN & MO-GT

UNIT: INCH

PIPE OD	WEIGHT	PIN BLANKING DIMENSIONS			COUPLING BOX BLANKING DIMENSIONS, W (REGULAR)			ACCESSORY BOX BLANKING DIMENSIONS, W (REGULAR)			COUPLING BOX BLANKING DIMENSIONS, Wsc1 (SPECIAL CLEARANCE)			ACCESSORY BOX BLANKING DIMENSIONS, Wsc1 (SPECIAL CLEARANCE)							
		FINISHED PIN OD	FINISHED PIN ID	L _p	FINISHED BOX OD	BOX ID	L _b	FINISHED BOX OD	FINISHED BOX ID	L _b	FINISHED BOX OD	BOX ID	L _b	FINISHED BOX OD	FINISHED BOX ID	L _b					
		API TOLERANCE	+ 0.010 - N/A	+ N/A - 0.000	API TOLERANCE	+ 0.008 - 0.008	+ N/A - 0.000	API TOLERANCE	+ 0.008 - 0.008	+ N/A - 0.000	API TOLERANCE	+ 0.008 - 0.008	+ N/A - 0.000	API TOLERANCE	+ 0.031 - 0.016	+ 0.008 - 0.008	+ N/A - 0.000	API TOLERANCE	+ 0.031 - 0.008	+ 0.008 - 0.008	+ N/A - 0.000
4-1/2"	10.50	4.500	4.052	5.500	5.250	4.061	N/A	5.250	4.097	5.500	5.000	4.061	N/A	5.000	4.097	5.500	5.000	4.097	5.500	5.000	4.050
	11.60	4.500	4.000		5.250	4.061		5.250	4.050		5.000	4.061		5.000	4.050						
	12.60	4.500	3.958		5.250	4.061		5.250	4.012		5.000	4.061		5.000	4.012						
	13.50	4.500	3.920		5.250	4.061		5.250	3.978		5.000	4.061		5.000	3.978						
	15.10	4.500	3.826		5.250	4.061		5.250	3.893		5.000	4.061		5.000	3.893						
5"	15.00	5.000	4.408	5.500	5.800	4.550	N/A	5.800	4.467	5.500	5.563	4.550	N/A	5.563	4.467	5.500	5.563	4.467	5.500	5.563	4.348
	18.00	5.000	4.276		5.800	4.550		5.800	4.348		5.563	4.550		5.563	4.348						
	20.30	5.000	4.184		5.800	4.550		5.800	4.266		N/A	N/A		N/A	N/A						
	20.80	5.000	4.156		5.800	4.550		5.800	4.240		N/A	N/A		N/A	N/A						
	21.40	5.000	4.126		5.800	4.550		5.800	4.213		N/A	N/A		N/A	N/A						
	23.20	5.000	4.044		5.800	4.550		5.800	4.140		N/A	N/A		N/A	N/A						
5-1/2"	24.10	5.000	4.000	5.500	5.800	4.550	N/A	5.800	4.100	5.500	N/A	N/A	N/A	N/A	N/A	5.500	N/A	N/A	5.500	N/A	N/A
	15.50	5.500	4.950		6.300	5.046		6.300	5.005		6.050	5.046		6.050	5.005						
	17.00	5.500	4.892		6.300	5.046		6.300	4.953		6.050	5.046		6.050	4.953						
	20.00	5.500	4.778		6.300	5.046		6.300	4.850		6.050	5.046		6.050	4.850						
	23.00	5.500	4.670		6.300	5.046		6.300	4.753		6.050	5.046		6.050	4.753						
	26.00	5.500	4.548		6.300	5.046		6.300	4.643		6.050	5.046		6.050	4.643						
6"	26.80	5.500	4.500	5.500	6.300	5.046	N/A	6.300	4.600	5.500	N/A	N/A	N/A	N/A	N/A	5.500	N/A	N/A	5.500	N/A	N/A
	29.70	5.500	4.376		6.300	5.046		6.300	4.488		N/A	N/A		N/A	N/A						
	18.80	6.000	5.392		6.625	5.540		6.625	5.453		N/A	N/A		N/A	N/A						
	22.00	6.000	5.240		6.625	5.540		6.625	5.316		N/A	N/A		N/A	N/A						
6-5/8"	24.50	6.000	5.200	5.500	6.625	5.540	N/A	6.625	5.280	5.500	N/A	N/A	N/A	N/A	N/A	5.500	N/A	N/A	5.500	N/A	N/A
	20.00	6.625	6.049		7.390	6.159		7.390	6.107		7.000	6.159		7.000	6.107						
	23.00	7.000	6.366		7.875	6.522		7.875	6.429		7.656	6.522		7.656	6.429						
7"	26.00	7.000	6.276	5.500	7.875	6.522	N/A	7.875	6.348	5.500	7.656	6.522	N/A	7.656	6.348	5.500	7.656	6.348	5.500	7.656	6.266
	29.00	7.000	6.184		7.875	6.522		7.875	6.266		7.656	6.522		7.656	6.266						
	32.00	7.000	6.094		7.875	6.522		7.875	6.185		7.656	6.522		7.656	6.185						
	35.00	7.000	6.004		7.875	6.522		7.875	6.104		7.656	6.522		7.656	6.104						
	38.00	7.000	5.920		7.875	6.522		7.875	6.028		7.656	6.522		7.656	6.028						
	26.40	7.625	6.969		8.500	7.136		8.500	7.035		8.125	7.136		8.125	7.035						
7-5/8"	29.70	7.625	6.875	5.500	8.500	7.136	N/A	8.500	6.950	5.500	8.125	7.136	N/A	8.125	6.950	5.500	8.125	6.950	5.500	8.125	6.851
	33.70	7.625	6.765		8.500	7.136		8.500	6.851		8.125	7.136		8.125	6.851						
	39.00	7.625	6.625		8.500	7.136		8.500	6.725		8.125	7.136		8.125	6.725						
	24.00	8.625	8.097		9.625	8.126		9.625	8.150		9.125	8.126		9.125	8.150						
8-5/8"	28.00	8.625	8.017	5.500	9.625	8.126	N/A	9.625	8.078	5.500	9.125	8.126	N/A	9.125	8.078	5.500	9.125	8.078	5.500	9.125	8.178
	32.00	8.625	7.921		9.625	8.126		9.625	7.991		9.125	8.126		9.125	7.991						
	36.00	8.625	7.825		9.625	8.126		9.625	7.905		9.125	8.126		9.125	7.905						
9-5/8"	36.00	9.625	8.921	5.500	10.625	9.125	N/A	10.625	8.991	5.500	10.125	9.125	N/A	10.125	8.991	5.500	10.125	8.991	5.500	10.125	8.914
	40.00	9.625	8.835		10.625	9.125		10.625	8.914		10.125	9.125		10.125	8.914						
	43.50	9.625	8.755		10.625	9.125		10.625	8.842		10.125	9.125		10.125	8.842						
	47.00	9.625	8.681		10.625	9.125		10.625	8.775		10.125	9.125		10.125	8.775						
9-7/8"	53.50	9.625	8.535	5.500	10.625	9.125	N/A	10.625	8.644	5.500	10.125	9.125	N/A	10.125	8.644	5.500	10.125	8.644	5.500	10.125	N/A
	62.80	9.875	8.625		10.875	9.371		10.875	8.750		N/A	N/A		N/A	N/A						
	40.50	10.750	10.050		11.750	10.250		11.750	10.120		11.250	10.250		11.250	10.120						
10-3/4"	45.50	10.750	9.950	5.500	11.750	10.250	N/A	11.750	10.030	5.500	11.250	10.250	N/A	11.250	10.030	5.500	11.250	10.030	5.500	11.250	9.940
	51.00	10.750	9.850		11.750	10.250		11.750	9.940		11.250	10.250		11.250	9.940						
	55.50	10.750	9.760		11.750	10.250		11.750	9.859		11.250	10.250		11.250	9.859						
	60.70	10.750	9.660		11.750	10.250		11.750	9.769		11.250	10.250		11.250	9.769						
	71.10	10.750	9.450		11.750	10.250		11.750	9.580		11.250	10.250		11.250	9.580						
11-3/4"	47.00	11.750	11.000	5.500	12.750	11.246	N/A	12.750	11.075	5.500	N/A	N/A	N/A	N/A	N/A	5.500	N/A	N/A	5.500	N/A	N/A
	54.00	11.750	10.880		12.750	11.246		12.750	10.967		N/A	N/A		N/A	N/A						
	60.00	11.750	10.772		12.750	11.246		12.750	10.870		N/A	N/A		N/A	N/A						
11-7/8"	71.80	11.875	10.711	5.500	12.850	11.371	N/A	12.850	10.827	5.500	N/A	N/A	N/A	N/A	N/A	5.500	N/A	N/A	5.500	N/A	N/A
	54.50	13.375	12.615		14.375	12.875		14.375	12.691		N/A	N/A		N/A	N/A						
	61.00	13.375	12.515		14.375	12.875		14.375	12.061		N/A	N/A		N/A	N/A						
	68.00	13.375	12.415		14.375	12.875		14.375	12.511		N/A	N/A		N/A	N/A						
	72.00	13.375	12.347		14.375	12.875		14.375	12.450		N/A	N/A		N/A	N/A						
13-3/8"	65.00	16.000	15.250	5.500	17.000	15.451	N/A	17.000	15.325	5.500	N/A	N/A	N/A	N/A	N/A	5.500	N/A	N/A	5.500	N/A	N/A
	75.00	16.000	15.124		17.000	15.451		17.000	15.212		N/A	N/A		N/A	N/A						
	84.00	16.000	15.010		17.000	15.451		17.000	15.109		N/A	N/A		N/A	N/A						
	94.50	16.000	14.876		17.000	15.451		17.000	14.988		N/A	N/A		N/A	N/A						
	109.00	16.000	14.688		17.000	15.451		17.000	14.819		N/A	N/A		N/A	N/A						
16"	87.50	18.625	17.755	5.500	20.000	18.074	N/A	20.000	17.842	5.500	N/A	N/A	N/A	N/A	N/A	5.500	N/A	N/A	5.500	N/A	N/A
	94.50	18.625	17.689		20.000	18.074		20.000	17.783		N/A	N/A		N/A	N/A						
	112.00	18.625	17.467		20.000	18.074		20.000	17.583		N/A	N/A		N/A	N/A						
	126.00	18.625	17.353		20.000	18.074		20.000	17.480		N/A	N/A		N/A	N/A						
18-5/8"	94.00	20.000	19.124	5.500	21.000	19.449	N/A	21.000	19.212	5.500	N/A	N/A	N/A	N/A	N/A	5.500	N/A	N/A	5.500	N/A	N/A
	106.50	20.000	19.000		21.000	19.449		21.000	19.100		N/A	N/A		N/A	N/A						
	133.00	20.000	18.730		21.000	19.449		21.000	18.857		N/A	N/A		N/A	N/A						

TABLE 2. BD (SPECIAL CLEARANCE, Wsc2) FOR GEOCONN & MO-GT

UNIT: INCH

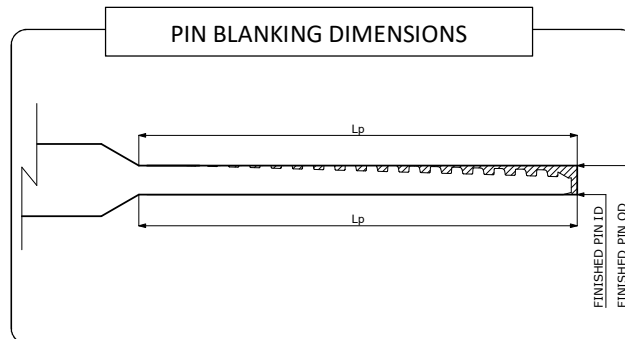
PIPE OD	WEIGHT	PIN BLANKING DIMENSIONS			COUPLING BOX BLANKING DIMENSIONS, Wsc2 (SPECIAL CLEARANCE)			ACCESSORY BOX BLANKING DIMENSIONS, Wsc2 (SPECIAL CLEARANCE)		
		FINISHED PIN OD	FINISHED PIN ID	L _p	FINISHED BOX OD	BOX ID	L _b	FINISHED BOX OD	FINISHED BOX ID	L _b
		API TOLERANCE	+ 0.010 - N/A	+ N/A - 0.000	+ 0.031 - 0.016	+ 0.008 - 0.008	+ N/A - 0.000	+ 0.031 - 0.016	+ 0.008 - 0.008	+ N/A - 0.000
4-1/2"	10.50	4.500	4.052	5.500	4.875	4.061	N/A	4.875	4.097	5.500
	11.60	4.500	4.000		4.875	4.061		4.875	4.050	
	12.60	4.500	3.958		4.875	4.061		4.875	4.012	
	13.50	4.500	3.920		4.875	4.061		4.875	3.978	
15.10	4.500	3.826	N/A		N/A	N/A		N/A		
5"	15.00	5.000	4.408		5.375	4.550		5.375	4.467	
	18.00	5.000	4.276		5.375	4.550		5.375	4.348	
5-1/2"	15.50	5.500	4.950		5.875	5.046		5.875	5.005	
	17.00	5.500	4.892		5.875	5.046		5.875	4.953	
	20.00	5.500	4.778		5.875	5.046		5.875	4.850	
	23.00	5.500	4.670		N/A	N/A		N/A	N/A	

TABLE 3. BD (REGULAR BOX OD & SPECIAL CLEARANCE, Wsc1, Wsc2) FOR GEOCONN-TS & MO-GT-TS

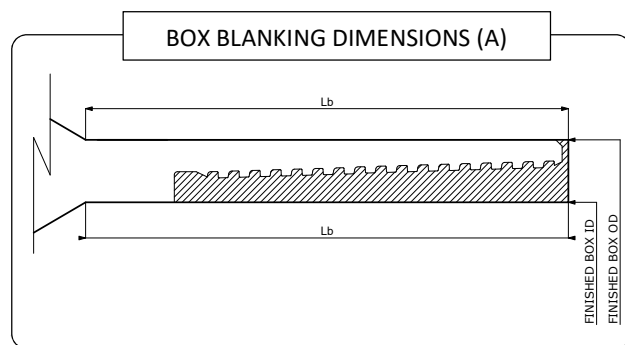
UNIT: INCH

PIPE OD	WEIGHT	PIN BLANKING DIMENSIONS			BOX BLANKING DIMENSIONS, W (REGULAR)			BOX BLANKING DIMENSIONS, Wsc1 (SPECIAL CLEARANCE)			BOX BLANKING DIMENSIONS, Wsc2 (SPECIAL CLEARANCE)		
		FINISHED PIN OD	FINISHED PIN ID	L _p	FINISHED BOX OD	FINISHED BOX ID	L _b	FINISHED BOX OD	FINISHED BOX ID	L _b	FINISHED BOX OD	FINISHED BOX ID	L _b
		API TOLERANCE	+ 0.010 - N/A	+ N/A - 0.000	API TOLERANCE	+ 0.008 - 0.008	+ N/A - 0.000	+ 0.031 - 0.016	+ 0.008 - 0.008	+ N/A - 0.000	+ 0.031 - 0.016	+ 0.008 - 0.008	+ N/A - 0.000
4-1/2"	10.50	4.500	4.052	6.500	5.250	4.097	6.500	5.000	4.097	6.500	4.875	4.097	
	11.60	4.500	4.000		5.250	4.050		5.000	4.050		4.875	4.050	
	12.60	4.500	3.958		5.250	4.012		5.000	4.012		4.875	4.012	
	13.50	4.500	3.920		5.250	3.978		5.000	3.978		4.875	3.978	
	15.10	4.500	3.826		5.250	3.893		5.000	3.893		N/A	N/A	
5"	15.00	5.000	4.408		5.800	4.467		5.563	4.467		5.375	4.467	
	18.00	5.000	4.276		5.800	4.348		5.563	4.348		5.375	4.348	
	20.30	5.000	4.184		5.800	4.266		N/A	N/A		N/A	N/A	
	20.80	5.000	4.156		5.800	4.240		N/A	N/A		N/A	N/A	
	21.40	5.000	4.126		5.800	4.213		N/A	N/A		N/A	N/A	
	23.20	5.000	4.044		5.800	4.140		N/A	N/A		N/A	N/A	
	24.10	5.000	4.000		5.800	4.100		N/A	N/A		N/A	N/A	
5-1/2"	15.50	5.500	4.950	6.300	5.005	6.050	5.005	5.875	5.005				
	17.00	5.500	4.892	6.300	4.953	6.050	4.953	5.875	4.953				
	20.00	5.500	4.778	6.300	4.850	6.050	4.850	5.875	4.850				
	23.00	5.500	4.670	6.300	4.753	6.050	4.753	N/A	N/A				
	26.00	5.500	4.548	6.300	4.643	6.050	4.643	N/A	N/A				
	26.80	5.500	4.500	6.300	4.600	N/A	N/A	N/A	N/A				
6"	29.70	5.500	4.376	6.300	4.488	N/A	N/A	N/A	N/A				
	18.80	6.000	5.392	6.625	5.453	N/A	N/A	N/A	N/A				
	22.00	6.000	5.240	6.625	5.316	N/A	N/A	N/A	N/A				
6-5/8"	24.50	6.000	5.200	6.625	5.280	N/A	N/A	N/A	N/A				
	20.00	6.625	6.049	7.390	6.107	7.000	6.107	N/A	N/A				
7"	23.00	7.000	6.366	7.875	6.429	7.656	6.429	N/A	N/A				
	26.00	7.000	6.276	7.875	6.348	7.656	6.348	N/A	N/A				
	29.00	7.000	6.184	7.875	6.266	7.656	6.266	N/A	N/A				
	32.00	7.000	6.094	7.875	6.185	7.656	6.185	N/A	N/A				
	35.00	7.000	6.004	7.875	6.104	7.656	6.104	N/A	N/A				
	38.00	7.000	5.920	7.875	6.028	7.656	6.028	N/A	N/A				
7-5/8"	26.40	7.625	6.969	8.500	7.035	8.125	7.035	N/A	N/A				
	29.70	7.625	6.875	8.500	6.950	8.125	6.950	N/A	N/A				
	33.70	7.625	6.765	8.500	6.851	8.125	6.851	N/A	N/A				
	39.00	7.625	6.625	8.500	6.725	8.125	6.725	N/A	N/A				
8-5/8"	24.00	8.625	8.097	9.625	8.150	9.125	8.150	N/A	N/A				
	28.00	8.625	8.017	9.625	8.078	9.125	8.078	N/A	N/A				
	32.00	8.625	7.921	9.625	7.991	9.125	7.991	N/A	N/A				
	36.00	8.625	7.825	9.625	7.905	9.125	7.905	N/A	N/A				
9-5/8"	36.00	9.625	8.921	10.625	8.991	10.125	8.991	N/A	N/A				
	40.00	9.625	8.835	10.625	8.914	10.125	8.914	N/A	N/A				
	43.50	9.625	8.755	10.625	8.842	10.125	8.842	N/A	N/A				
	47.00	9.625	8.681	10.625	8.775	10.125	8.775	N/A	N/A				
	53.50	9.625	8.535	10.625	8.644	10.125	8.644	N/A	N/A				
10-3/4"	40.50	10.750	10.050	11.750	10.120	11.250	10.120	N/A	N/A				
	45.50	10.750	9.950	11.750	10.030	11.250	10.030	N/A	N/A				
	51.00	10.750	9.850	11.750	9.940	11.250	9.940	N/A	N/A				
	55.50	10.750	9.760	11.750	9.859	11.250	9.859	N/A	N/A				
	60.70	10.750	9.660	11.750	9.769	11.250	9.769	N/A	N/A				
	71.10	10.750	9.450	11.750	9.580	11.250	9.580	N/A	N/A				
13-3/8"	54.50	13.375	12.615	14.375	12.691	N/A	N/A	N/A	N/A				
	61.00	13.375	12.515	14.375	12.061	N/A	N/A	N/A	N/A				
	68.00	13.375	12.415	14.375	12.511	N/A	N/A	N/A	N/A				
	72.00	13.375	12.347	14.375	12.450	N/A	N/A	N/A	N/A				
20"	94.00	20.000	19.124	21.000	19.212	N/A	N/A	N/A	N/A				
	106.50	20.000	19.000	21.000	19.100	N/A	N/A	N/A	N/A				
	133.00	20.000	18.730	21.000	18.857	N/A	N/A	N/A	N/A				

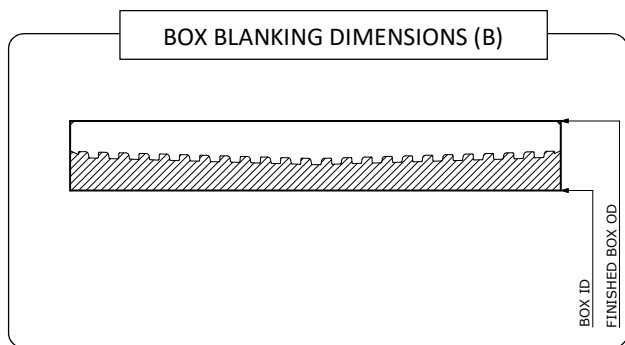
==DEFINITION of BLANKING DIMENSIONS==



a) LENGTH OF L_p AND L_b DOES NOT INCLUDE RE-CUT LENGTH.



b) LENGTH OF L_p AND L_b DOES NOT INCLUDE RE-CUT LENGTH.
 c) WHEN BOX OD IS TURNED, AIMING OD TOLERANCE IS +/- 0.015".



d) ONLY FOR GEOCONN AND MO-GT COUPLING BOX.
 e) LENGTH OF L_p AND L_b DOES NOT INCLUDE RE-CUT LENGTH.
 f) WHEN BOX OD IS TURNED, AIMING OD TOLERANCE IS +/- 0.015".