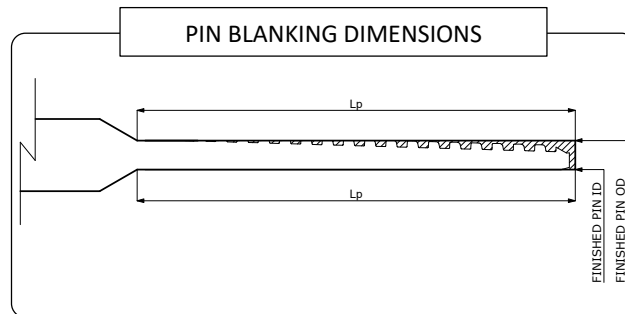


Rev. 2: Maximum production size expanded to 22"

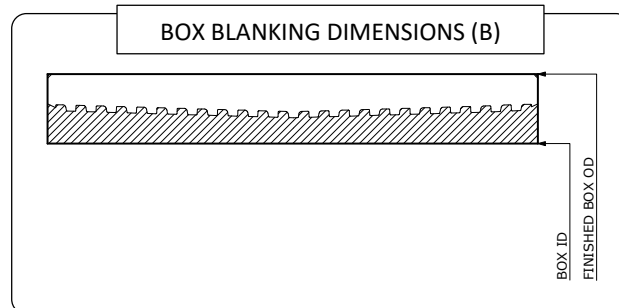
MO-3TP BLANKING DIMENSIONS

OD	Weight	WT	Pin Blanking Dimensions			Coupling (Box) Blanking Dimension W (Regular)	
			Finished Pin OD	Finished Pin ID	Lp	Finished Box OD	Box ID
			API Tolerance	+ 0.010 - N/A	+ N/A - 0.000	API Tolerance	+ 0 - N/A
16"	65.00	0.375	16.000	15.250	5.500	17.000	15.270
	75.00	0.438	16.000	15.124		17.000	15.270
	84.00	0.495	16.000	15.010		17.000	15.200
	94.50	0.562	16.000	14.876		17.000	15.200
	109.00	0.656	16.000	14.688		17.000	15.200
18-5/8"	87.50	0.435	18.625	17.755		20.000	17.800
	94.50	0.468	18.625	17.689		20.000	17.800
	112.00	0.579	18.625	17.467		20.000	17.800
	126.00	0.636	18.625	17.353		20.000	17.800
20"	94.00	0.438	20.000	19.124		21.000	19.200
	106.50	0.500	20.000	19.000		21.000	19.200
	133.00	0.635	20.000	18.730		21.000	19.200
22"	146.5	0.625	22.000	20.750		23.000	21.20
	173.9	0.762	22.000	20.476	23.000	21.20	
	180.0	0.781	22.000	20.438	23.000	21.20	
	226.0	1.000	22.000	20.000	23.000	21.20	

==DEFINITION of BLANKING DIMENSIONS==



a) LENGTH OF L_p AND L_b DOES NOT INCLUDE RE-CUT LENGTH.



b) When Box OD is turned, aiming OD tolerance is +/- 0.015".